

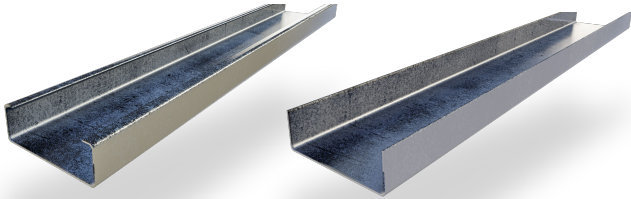
# Building the future **Faster. Cheaper. Greener.**

Transforming Construction with Offsite Prefabricated  
Light Gauge and Cold Formed Steel Solutions.



# About us

Liga Steel fabricates **light gauge steel framing components** used across a range of construction projects, including studs, tracks, and joists along with **fully-engineered and prefabricated assembled systems** including load and non-load bearing wall panels, lateral force resisting walls, and truss structures.



# Not just manufacturing.

We are with you  
in **every step** of  
the way



## Design & Engineering

Our team creates detailed plans and specifications according to construction objectives and conditions.



## Manufacturing

Components are manufactured in our factory, ensuring quality control and precision.



## Transport

Prefabricated components are transported to the construction site.



## Installation

The easy installation of prefabricated parts significantly reduces construction timelines

# Benefits of **Light Gauge Steel**



Eco Friendly



Cost-Effective



Durable



Versatile



Fire Resistant



Faster Construction

# Empowering **Off-Site Construction**

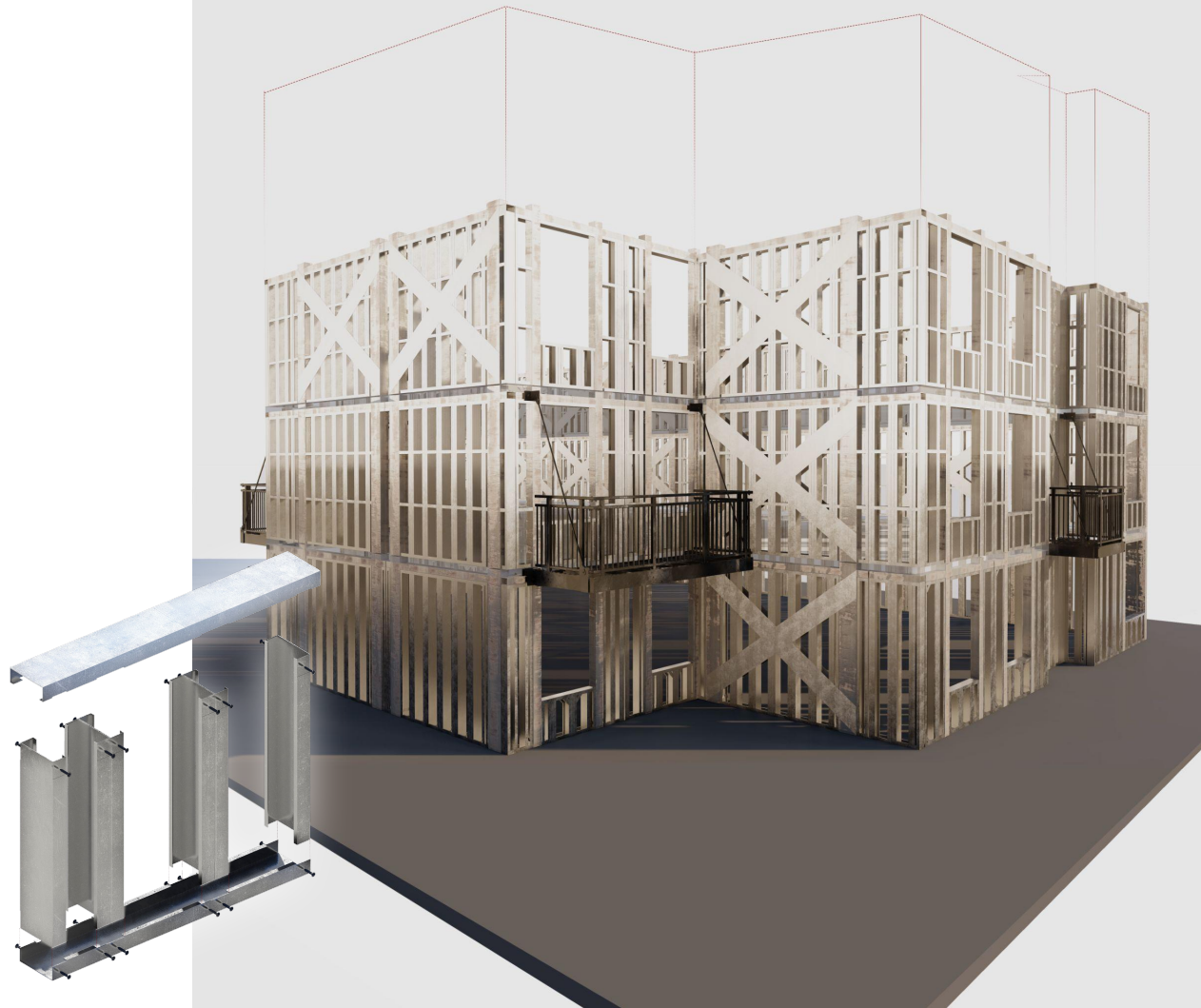
Liga Steel offers fully prefabricated load and non-load bearing wall and truss assemblies. Leveraging off-site fabrication of fully assembled components allows builders to realize substantial cost savings and reduced construction timelines.

- Off-site construction offers a [systematic, controlled, and efficient approach](#).
- Prefabricated building components [reduce errors and increase quality](#).
- Using prefabricated LGS components provides a [cost-effective and sustainable](#) building method.
- Controlled factory conditions [minimize risks and improve efficiency](#).
- Fully assembled components are delivered directly to job sites allowing [for faster installation and condensed project completion timelines](#).

# Design & Engineering

We begin by analyzing the project requirements and constraints, including architectural designs, structural considerations, and site conditions.

Through collaborative efforts, we develop detailed plans and specifications that align with the project's goals, ensuring seamless integration with on-site assembly or installation.





# Our **Products**

---

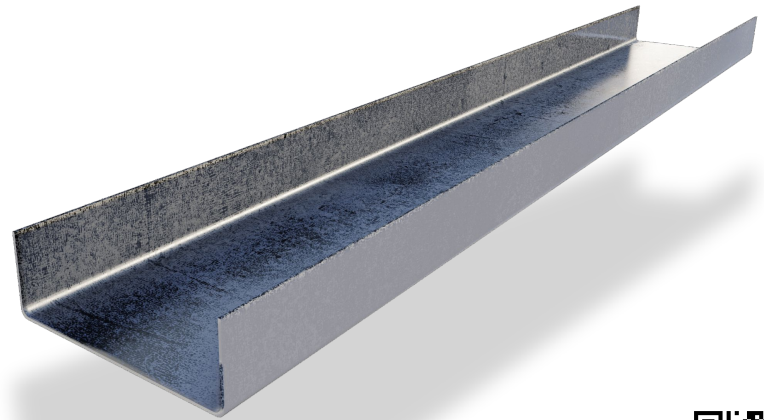
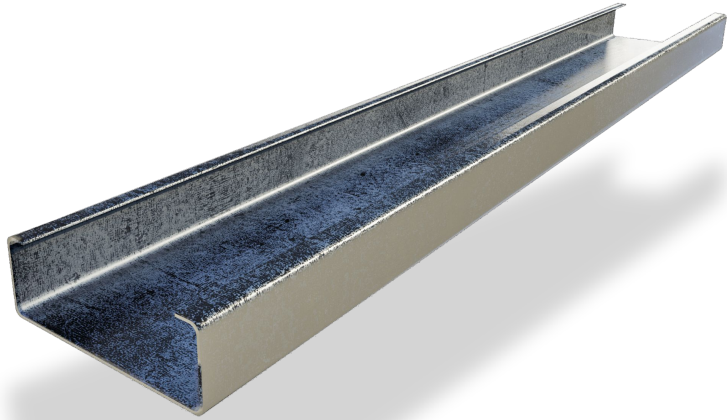
# LGS Framing Components

Liga Steel produces Light Gauge Steel Framing Components, including stud and track section profiles that can be delivered as individual components or full panel assemblies.

The stud and track sections are cold-formed from steel coils conforming to ASTM A653 SS Grade 50 Class 1, with a minimum G60 galvanized coating or ASTM A1003 Structural Grade 50 Type H (ST50H).

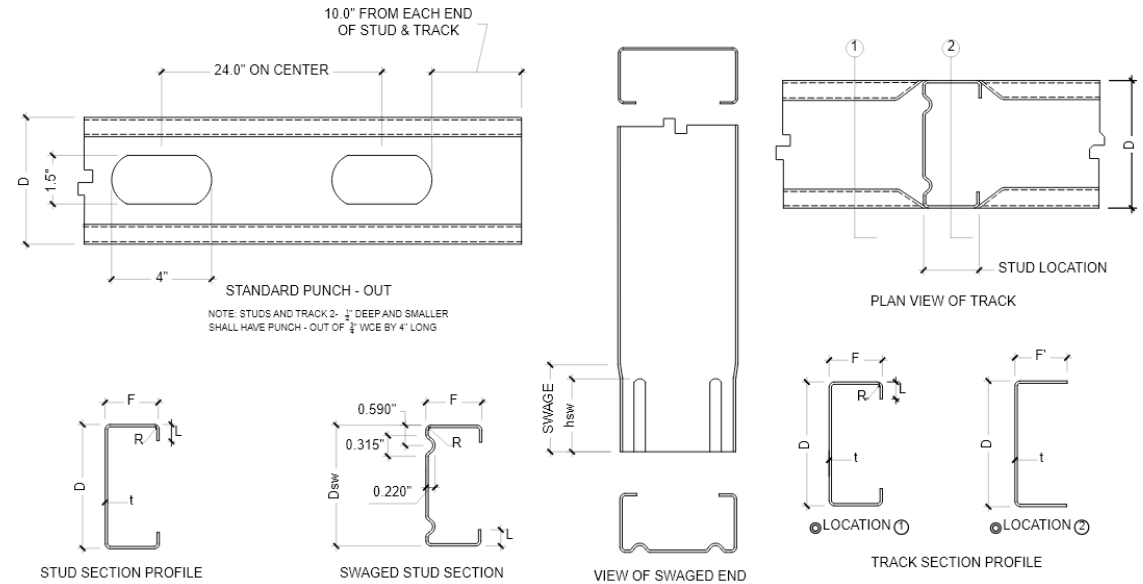


# LGS Framing Components



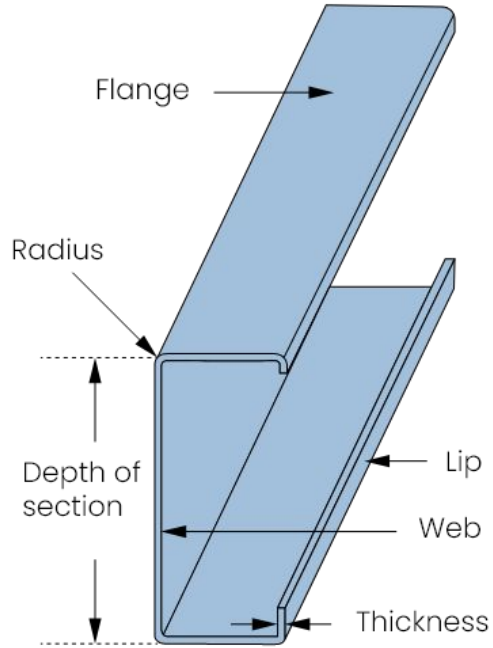
Scan this to see  
our catalogue

# Stud and Track Section Profiles

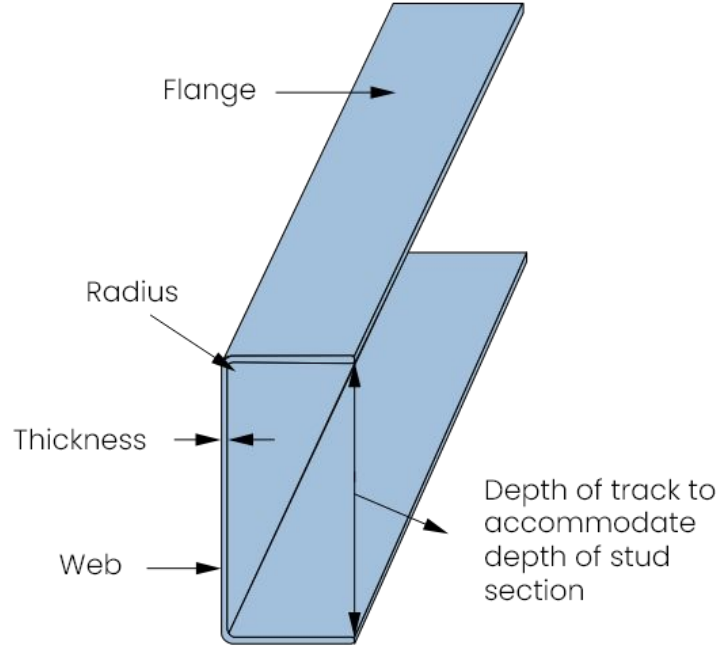


D= Total Web depth, in  
Dsw= Swaged Depth of Stud, in.  
F= Total Flange Width, in.  
F'= F-R-t, in.  
t= Base Metal Thickness, in.  
R= Corner Radius, in.  
L= Total Lip Width, in.  
hsw= effective height of swage = track flange + 3/8", in.

# Stud and Track Section Profiles



Stud or Joist section

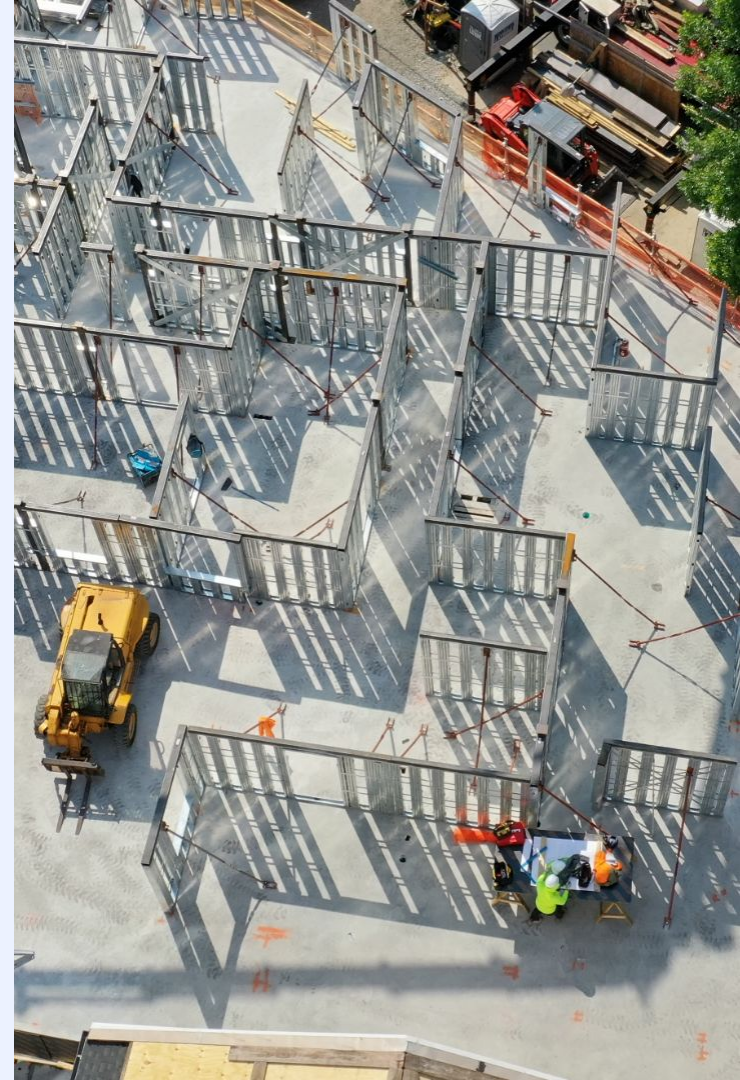


Track section

# LGS Panels

LGS panels are precision engineered structural and non-structural full wall and truss assemblies prefabricated in our controlled factory environment. These panels are created from cold-formed steel, ensuring durability and strength. The manufacturing process involves detailed design and engineering as well as precision fabrication where steel plates are cut, formed and assembled to specification.

LGS panels serve as building blocks for all types of building structures, offering exceptional strength-to-weight ratios and extensive design optionality for various construction projects.



# LGS Panels

Cold-formed steel framing

Integral Structural Steel (HSS) frame

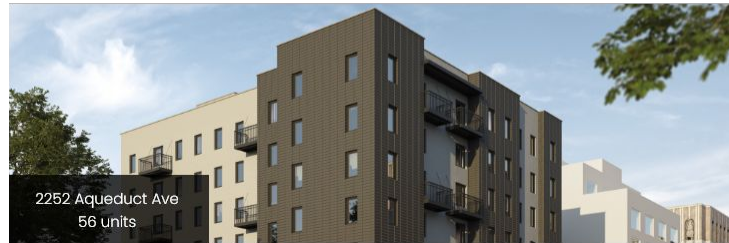
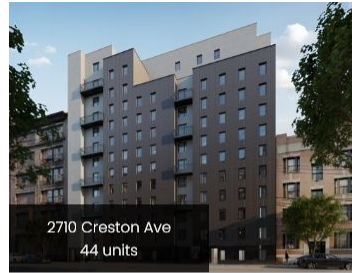
High durability and strength

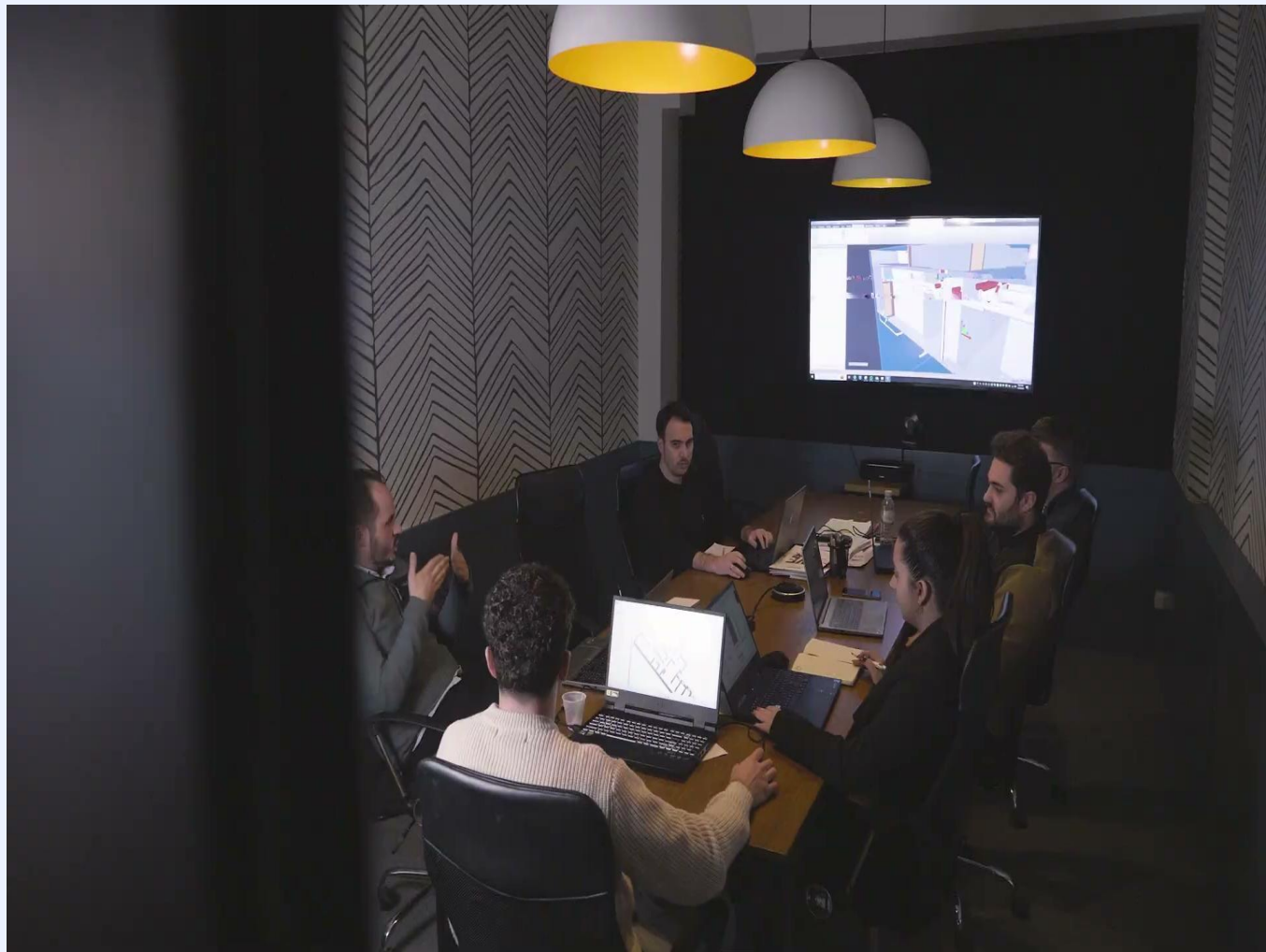
Effortlessly install MEPs on-site  
with pre-punched studs

Anchor bottom tracks to concrete slabs using  
precision index holes for seamless installation

# Developed with **Liga Steel**

Our products are already being used in new developments in New York, so we have more than just the proof of concept, we have developments that comply with all the quality standards and that are modeled, built, and assembled using our products.





# Technical Specs Appendix

---

## Light Gauge Steel Framing Components



Scan this to see our  
Framing Components catalogue

[View Here](#)



Scan this to see our  
ICC-ES Certification

[View Here](#)

# About our **Steel Framing Components**

Liga Steel is ICC-ES certified, ensuring our products meet the highest quality standards and comply with both the International Building Code (IBC) and California Building Code (CBC).

Our rolled steel coils are sourced from approved suppliers to ensure they meet the highest industry quality standards. Our cold-formed products are fabricated from steel coils conforming to ASTM A653, Grade 50, Class 1 steel, and other equivalent codes, providing superior strength and durability.

Furthermore, our products undergo a hot-dipped galvanization process, meeting a minimum coating of G60 for structural members and G40 for non-structural members, in compliance with ASTM A1003.

This robust coating ensures enduring durability, protecting against corrosion and maintaining structural integrity even in challenging environments.

Liga Steel's products are manufactured using some of the most advanced industrial machinery and deliver the strength and reliability required for projects of all scales.

**Thank You!**

